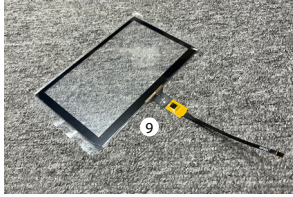
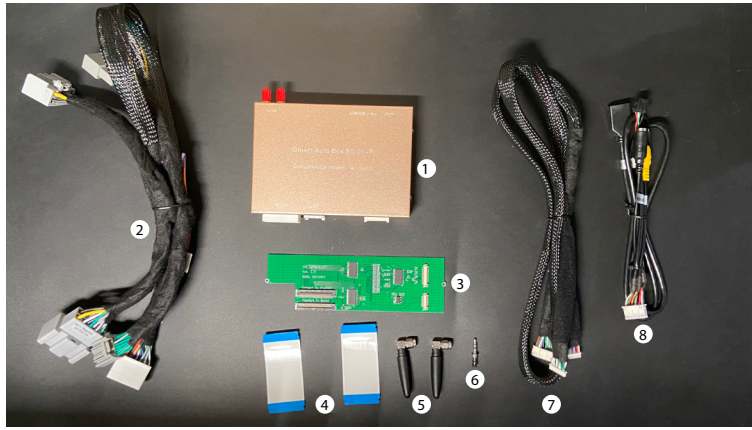


# 14 Volvo

## 1. Product List



Car MIC: 1H 2L

External MIC: 1L 2H



- ① SwedeSolutions box
- ② Power cord
- ③ PCB board
- ④ Flat cable\*2
- ⑤ Antenna\*2
- ⑥ AUX plug
- ⑦ LVDS cable
- ⑧ USB cable
- ⑨ Touch screen
- ⑩ Touch screen PCB board + cable

## 2. Button description and usage instructions



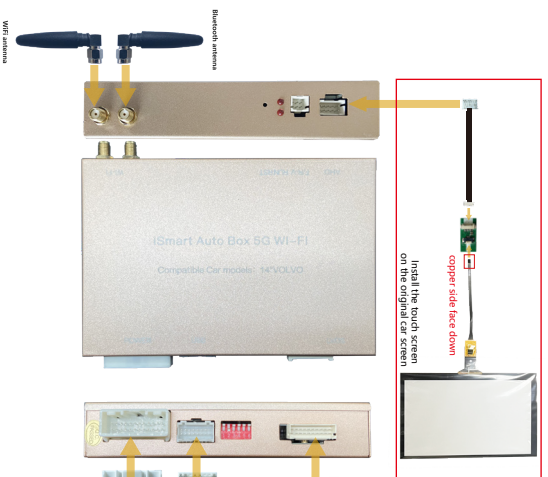
## 3. Modified wiring specifications

1.Before installation, please remove ① air conditioner trim panel, ② original car CD host, ③ screen, ④ co-pilot baseboard (you can place modules here), as shown below:



## 2. Wiring diagram

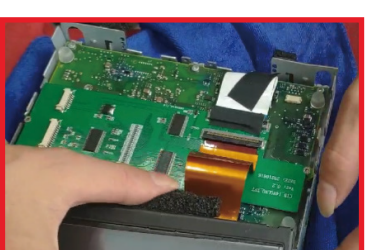
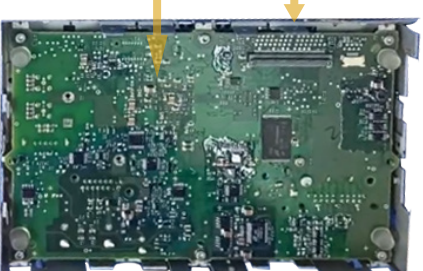
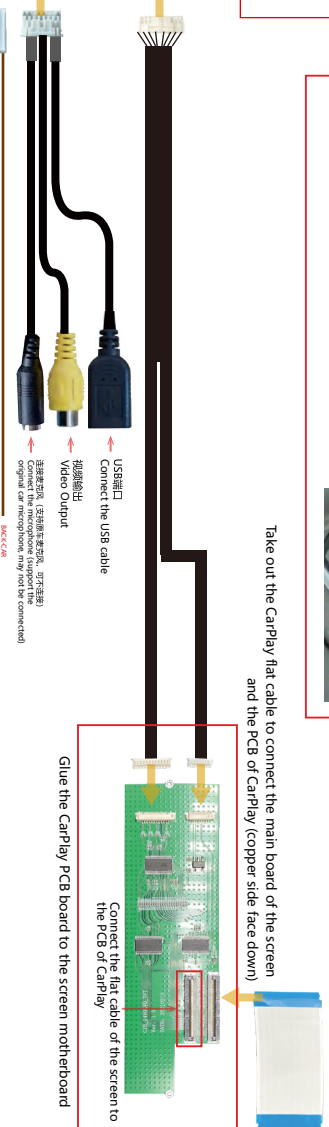
Old 2011-2014



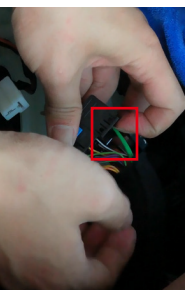
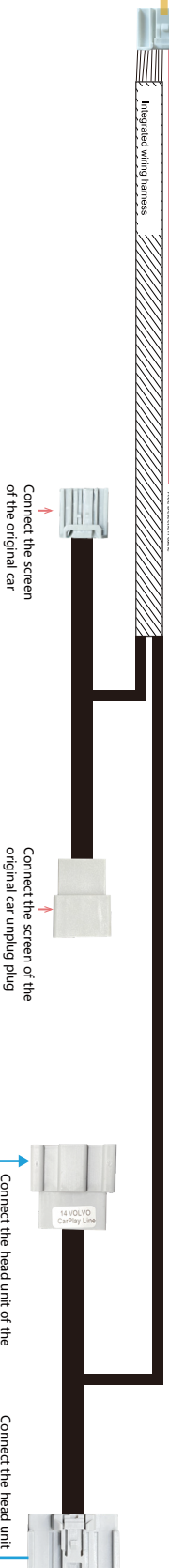
The AUX plug of CarPlay needs to be connected to the AUX interface of the original car



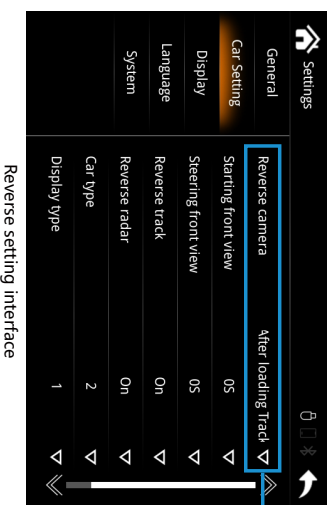
Take out the CarPlay flat cable to connect the main board of the screen and the PCB of CarPlay (copper side face down)



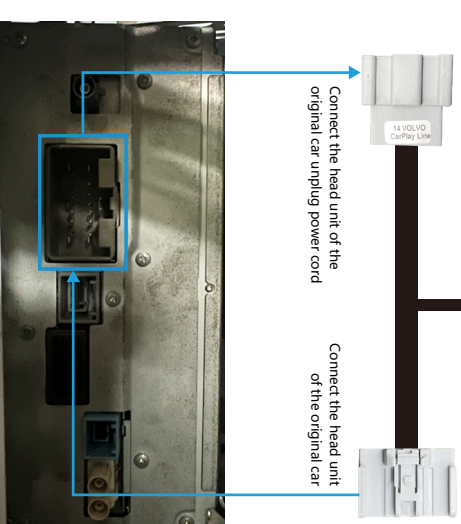
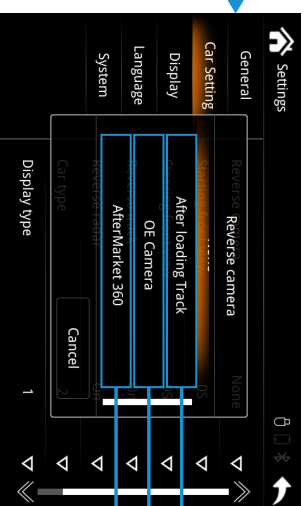
## Renderings



Note there is an optical fiber cable (usually green or orange) on the original car power cable, you need to take out the optical fiber cable and transfer it to the main line of CarPlay



## Reverse setting interface



#### 4. Wireless CarPlay connection

**1. Enter the media interface and Choose AUX.  
(If original car don't have AUX, please contact  
Business to purchase an iPod sound card;)**



**2. Long press EXIT button on the wheel to switch to carplay interface**



3. Connect the mobile phone to the CarPlay Bluetooth interface to use (enter the Bluetooth interface in the CarPlay system to view the CarPlay Bluetooth name)

